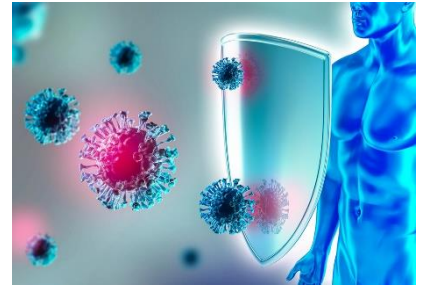


# Reharmonising Personal Ecology

## Clearing Injected Adverse Events and Detoxification



### 1 Day Seminar – Saturday, 6 April 2024

This seminar is designed to assist anyone directly or indirectly affected by the infusions, to clear the body of any foreign toxic substances and their effects - and to re-harmonise the whole being.

#### Overview:

- Once in your blood circulation, the **offending spike protein** binds to platelet receptors and the cells that line your blood vessels. This can cause platelets to clump together, resulting in cardiovascular damage, like blood clots.
- These **pathological toxins** are shown to cause neurological and cardiovascular complications.
- The mRNA enters your bloodstream and accumulates in a variety of organs, primarily **spleen, bone marrow, liver, adrenal glands and, in women, the ovaries**. The offending protein also travels to your **heart, brain and lungs**, where bleeding and or blood clots can occur as a result, and is expelled in breast milk.
- **Graphene Oxide (GO)** behaves exactly like C\*vid in the body.
- **Graphene Oxide** is the key component in the C\*vid-mRNA vaccine. More than 99 percent of the Pf\*zer vaccine is made up of **graphene oxide**. It disrupts the Liver and the Immune System via the Glutathione pathways.
- It can damage the liver and the kidneys, spur on the formation of granulomas in the lungs. It causes mini to macro blood clots. We will cover and correct **epigenetic** changes.
- **GO has magnetic properties**. mRNA and Lipid nano particles are not paramagnetic. Paramagnetic substances respond to electromagnetic energy fields.
- **Regular 'detox' routines** won't undo C\*vid19 vaccination or shedding.

#### **We will cover a variety of testing protocols, what to do and in which order.**

Explore procedures for testing these foreign components in the body! Discover the secrets of maintaining balance and avoiding suppression. Our innovative approach involves using vials to assess the need for balancing, understanding nutritional support factors, and implementing unique finger-modes, techniques, and corrections.

Join us for a comprehensive session that includes advanced testing, reflexes, and corrections. Uncover facets of which areas of the body to treat as we go "under the radar." Visualize the process with our engaging Powerpoint presentation. Take home a manual with a list of remedial support, and get hands-on experience testing most items right in class!

Workshop participation/investment: **Early bird if paid before Monday, 18 March 2024: \$425 (incl. GST). Save \$70!**  
Fee if paid **after** Monday, 18 March 2024: \$495 (incl. GST).

#### Seminar includes:

- PowerPoint presentation, with step-by-step guidance.
- PPT Handout with protocols, testing procedures and flowchart.
- Testing Vials.
- Remedial support factors (nutritional and other), available in class for hands-on testing.

#### **Please register your attendance by phone/email first.**

Subsequent Payment either by Credit Card, or Bank Transfer to Kinesiology Connection (BSB 083 004 Account # 84 588 6798). Reference: Your Name!

A receipt will be provided.

#### Venue: Kinesiology Connection

982-984 Toorak Road Camberwell VIC 3124 (9.00am – 5.00pm)

**Phone:** 03 9819 6835 or **Email:** [admin@kinesiology.com.au](mailto:admin@kinesiology.com.au)